

SATFINDER

The SatFinder program will assist in obtaining the proper settings for both the Azimuth and Elevation, which is required in order to properly align your dish to the satellite. This is available at <http://www.satnow.net> under "Installation Support". Enter your username and password to enter the site. SatFinder is also located on the installation CD ROM supplied with your system. Follow the directions below to use the SatFinder software on the CD:

1. Insert the ISAT Technical Support CD in your CD drive.
2. Double click on the SatFinder subdirectory folder on the CD.
3. Double click on the **satfinder.exe** file to run the program.
4. Enter your Zip Code (US only. Outside of the US enter the longitude and latitude of the dish location under the **Position – decimal degrees** heading) (Refer to Figure 1)

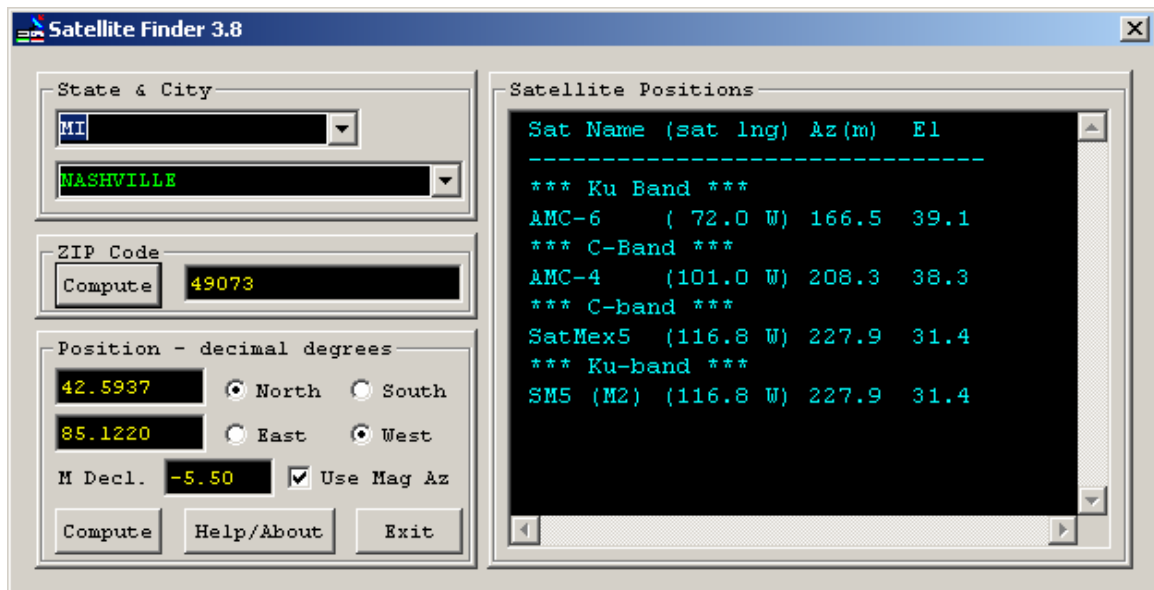


Figure 1

5. Hit the **Compute** button.
6. Make sure the **Use Mag Az** box is checked to ensure that the results will make use of magnetic North (the same as your compass) instead of true North
7. Look at the right side of the screen for the Correct Satellite (usually AMC-6)
8. The Azimuth and Elevation readings for aiming the satellite dish are shown