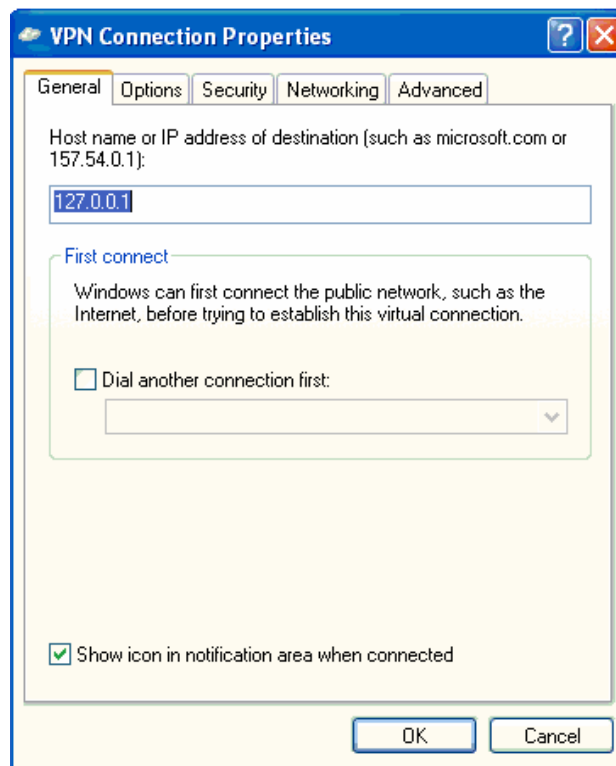


Using a VPN connection with the SatDirect Plus Broadband connection

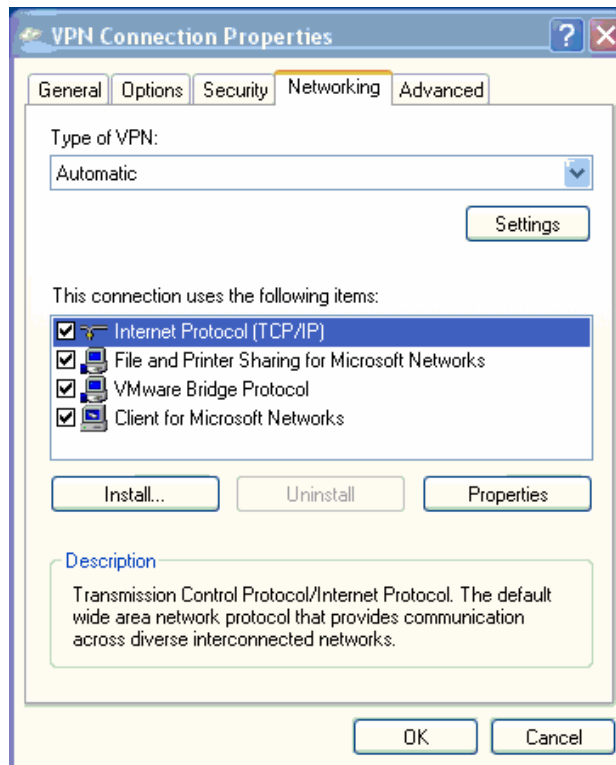
You will always need to change or check the setting for the default gateway used by the VPN connection when using SatDirect Plus. You should never use the Default Gateway setting on the VPN client.

Use the steps below to check the settings for your VPN connection:

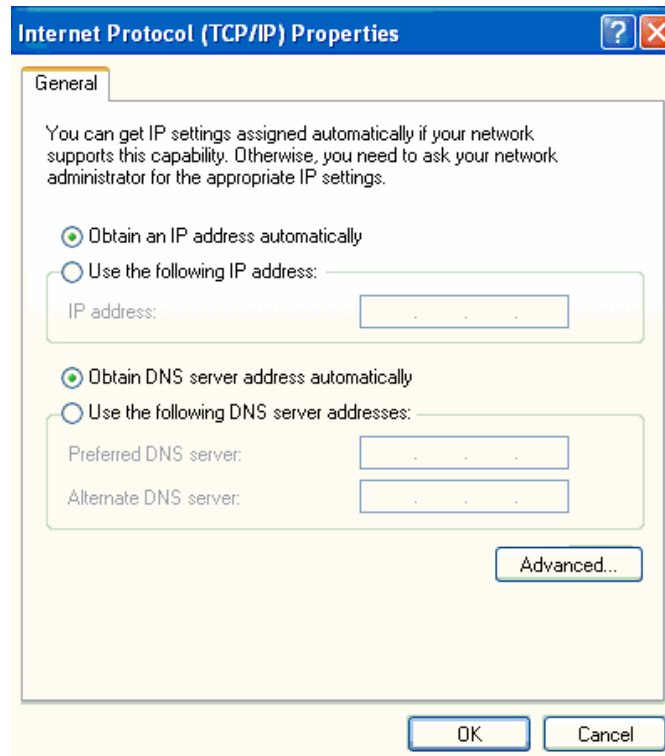
- Using Control Panel, open Network Connections
- Right-click on your VPN connection and choose Properties



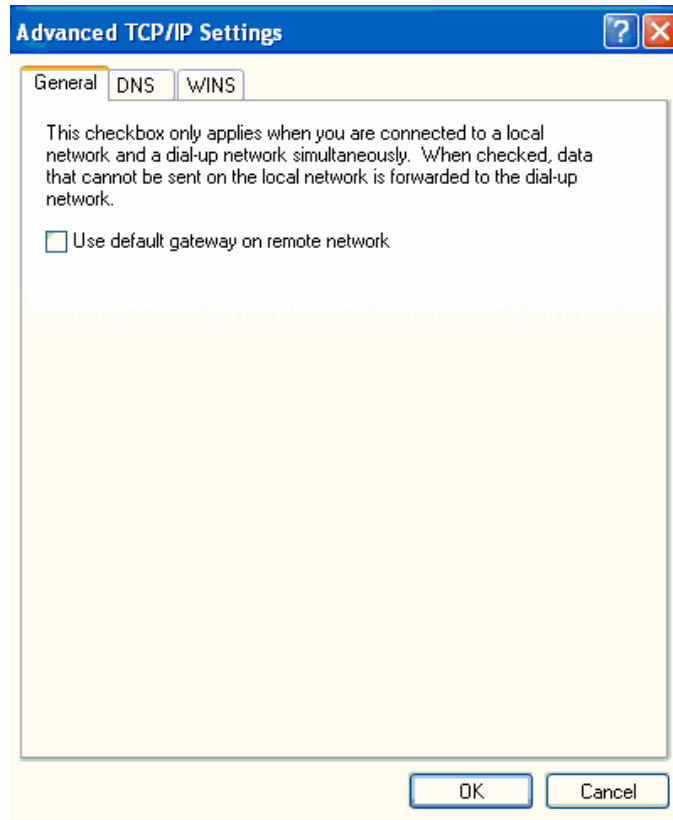
- Click on the tab labeled Networking to get to the network properties.



- Select the item Internet Protocol (TCP/IP). Then click on Properties.



- Click on the button labeled Advanced.



- The option to "Use default gateway on remote network" should be unchecked. If it isn't, please uncheck it.
- Click on the button labeled OK after making the change. You will have to keep clicking on several Ok buttons until you eventually close the properties for your VPN connection.

Note: Since SatDirect Plus uses a 10.xxx.xxx.xxx addressing scheme for its network, the IP address used for your VPN connection cannot be in the same subnet as the Main Data Hybrid-Net Single User Adapter.